

### Introduction

The purpose of this manual is to introduce the installation instructions of RS-485 MODBUS card of the KEOR COMPACT UPS.

This card is design according to the JBUS/MODBUS RTU protocol; it can provide the related information, such as status, alarm, measurement, command, etc. to other apparatus like large-scale monitor software, Internet communication, etc.

If the UPS system is operating in parallel, only one of UPS need to install this card, this configuration would allow this specific card to be able to perceive all the information in the parallel system.

*Note: Please, refer to the JBUS/MODBUS protocol manual for communication protocol.*

The RS-485 MODBUS card package includes below items,

- RS-485 MODBUS Card x 1
- M3 Screw x 2

### Hardware Installation Procedure

- Plug in the RS-485 card to the «Slot1» and then screw in the screws after the RS-485 card is firmly locked in to complete the installation procedure, as Figure 1 shows.

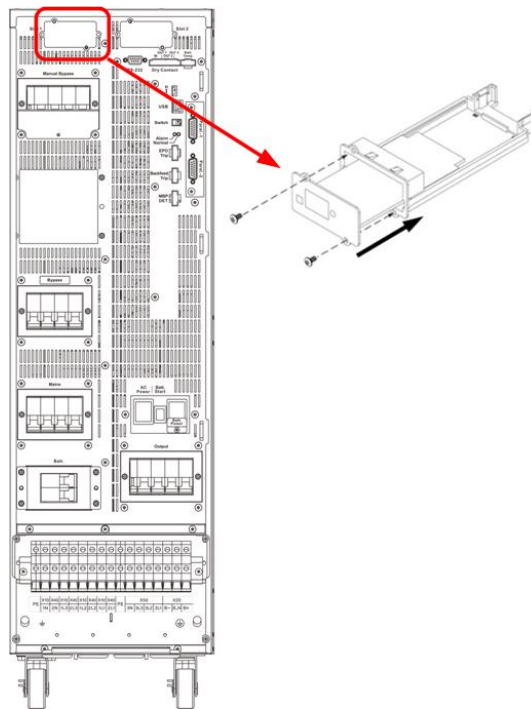
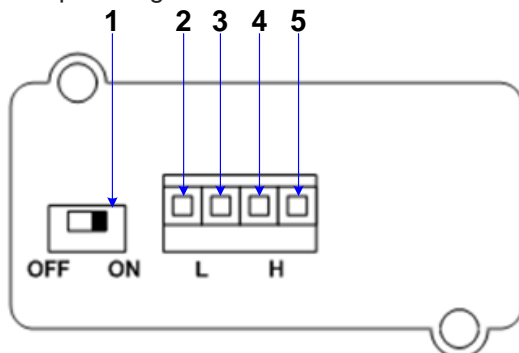


Figure 1

- The pin assignment of this card is shown in Figure 2.



1	Termination Resistor Switch
2	L (-)
3	L (-)
4	H (+)
5	H (+)

Figure 2

- A 120 ohms termination resistor is built in and selectable by a switch. This resistor is needed at both end of the line and must be switched or not depending on the location in the Modbus network topology.
- Switch to “ON” position for connect the termination resistor.

### Software Configuration

- Please, configure the setting of this card via the LCD control panel and the setup procedure as shows in Figure 3.

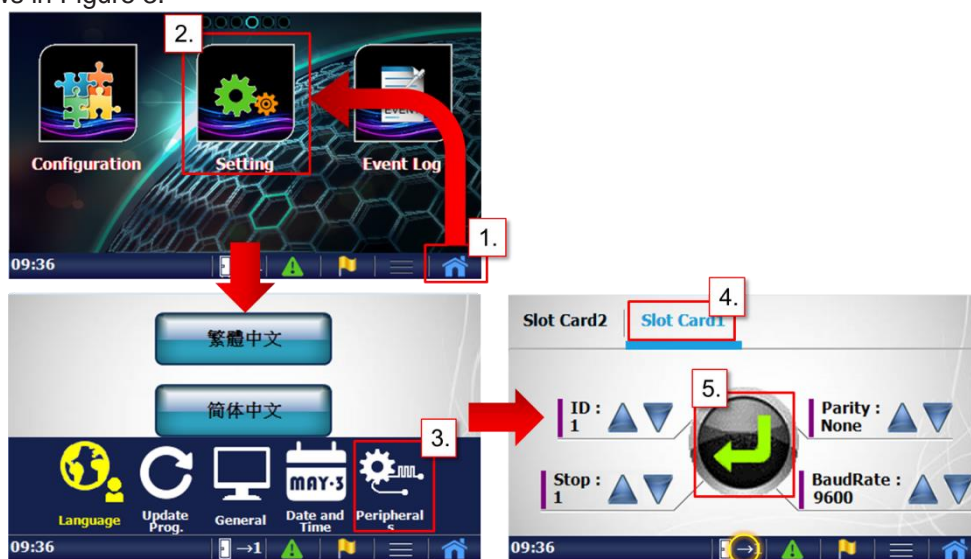



Figure 3

- In parallel system, please click  to select the machine ID which install RS-485 card before you change the setting.
- The programmable parameters are shown in the table below.

Item	Range	Default
ID	1~255	1
Stop Bit	1 , 2	1
Parity Check	Even, Odd, None	None
Baud Rate	9600, 19200, 38400, 57600	9600

### Safety and guarantee terms

- This card must be installed only with the UPS turned OFF and UNPLUGGED FROM THE MAINS.
- The Manufacturer declines all liabilities, direct and indirect, resulting from:
  - o disregard for the instructions by the skilled technician and a use of the card different from the one stated in the manual;
  - o use by personnel who have not read and understood the contents of the manual;
  - o a use not conforming to the specific laws existing in the country of installation;
  - o changes made to the equipment, operating logic or tampering;
  - o repairs unauthorized by the Technical Service Assistance of LEGRAND;
  - o damages caused by willful misconduct, gross negligence, exceptional events, fire or infiltration of liquids.